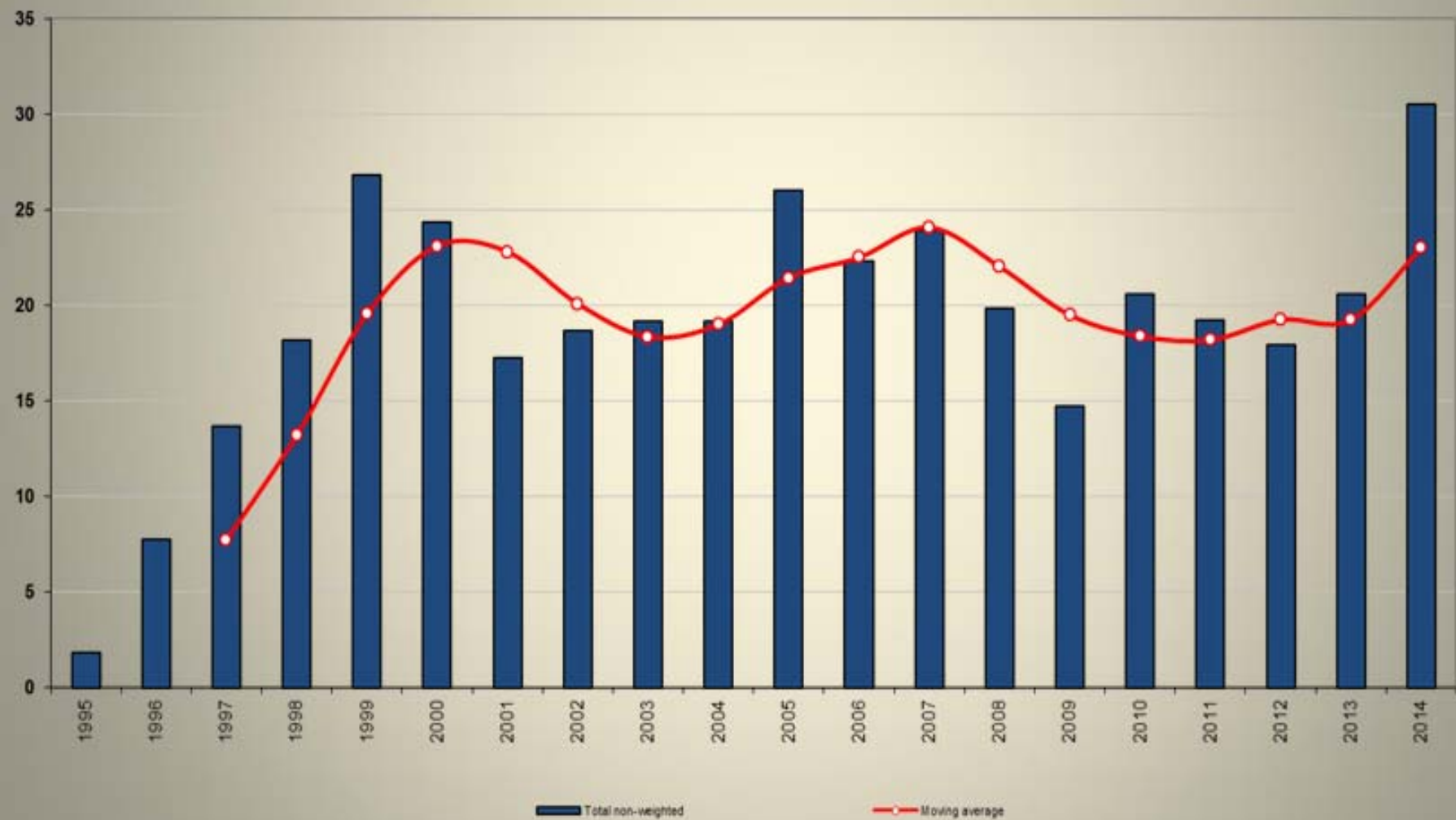


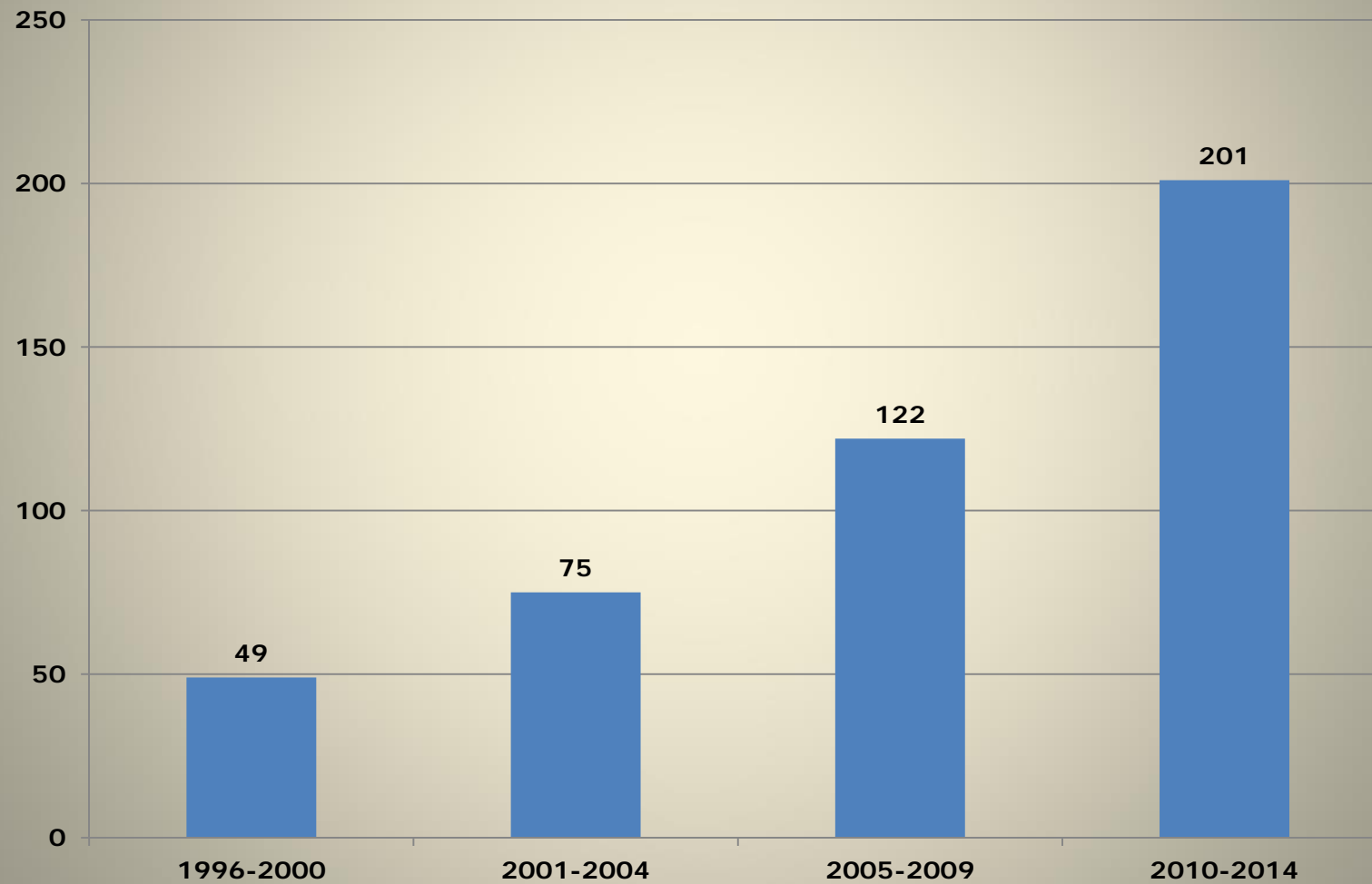
DSB Meeting

26 September 2014

Total active disputes per year *(as of 31 August 2014)*

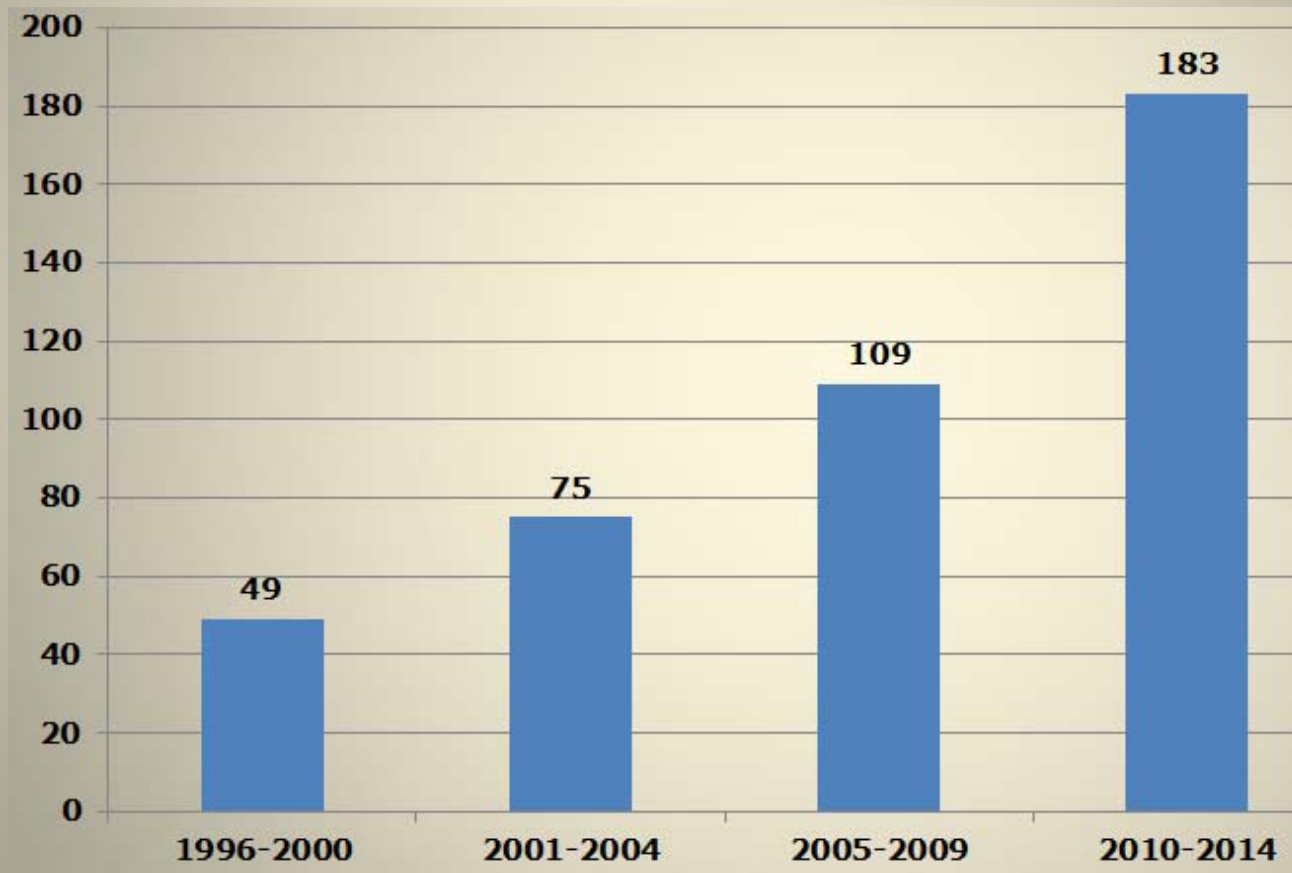


Number of pages of interim review and findings per 4-year period from 1995 to 2014

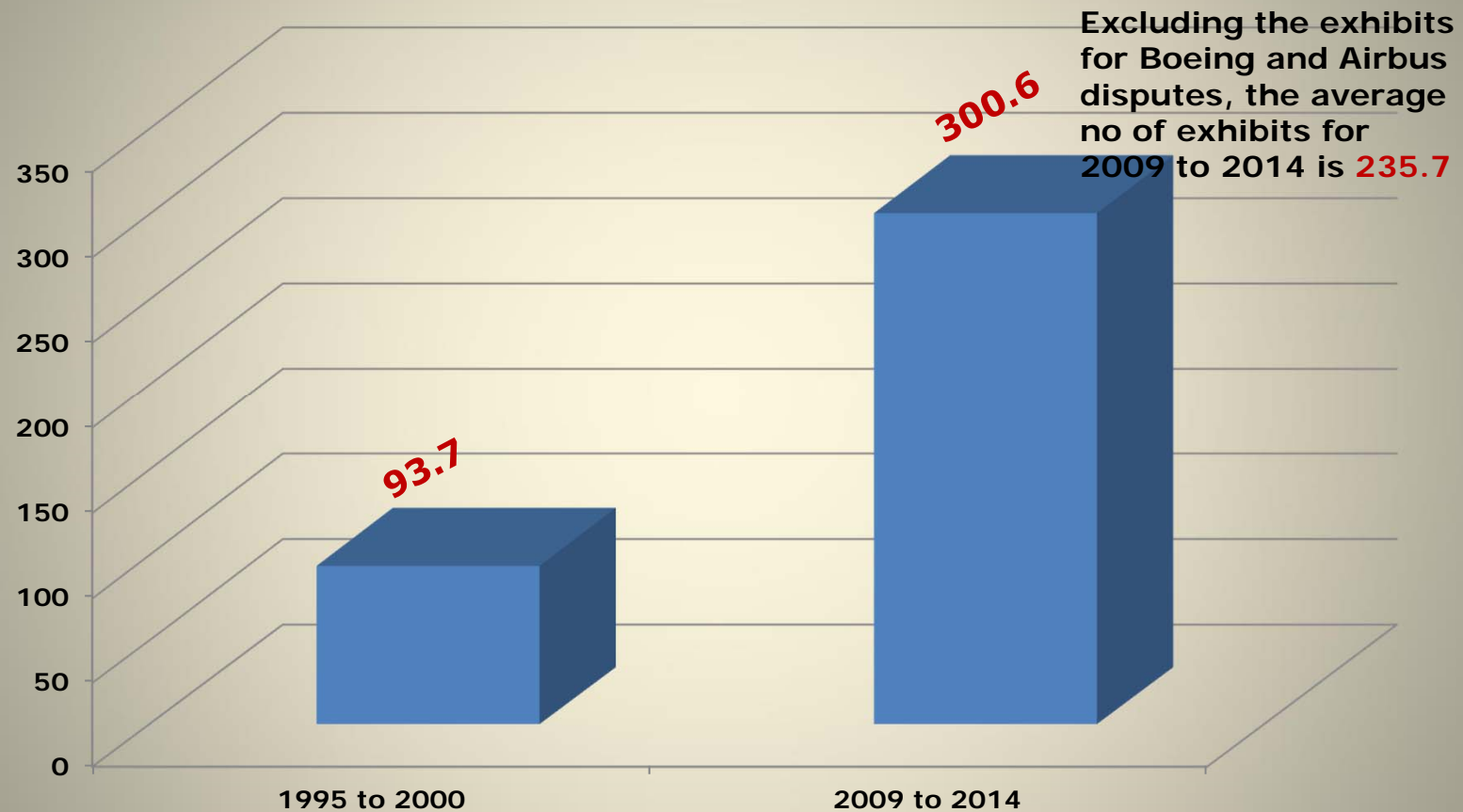


**Average number of pages of interim review and findings
per 4-year period from 1995 to 2014**

*(Excludes exceptionally long reports - e.g. DS291, DS316, and DS353;
and exceptionally short reports - e.g. DS383, DS402, DS422 and DS335)*



Average no. of exhibits: 1995-2000 vs 2009-2014



Staff Structures 1995, 2000 and Sept 2013

		1995			2000			Sept 2013		
		LAD	RULES	ABS	LAD	RULES	ABS	LAD	RULES	ABS
Lead lawyer	P	2	2	1	6	4	2	6	7	6
Lawyer	P	2		2	3	3	4	5	3	3
	T							4	6	1
Total per division		4	2	3	9	7	6	15	16	10
Overall Total		9			22			41		

DS support staff (paralegals; secretary to panels; editor)						1		4	3	
Admin assistants/ Secretaries/Depository Assistant		3	2	2	3	2	3	1	4	4
Total per division		3	2	2	3	3	3	5	7	4
Overall Total		7			9			16		

P: Permanent post

T: Temporary post

Staff Structures Post-Sept 2013 onwards

		End 2013			Late 2014			Short-term Future		
		LAD	RULES	ABS	LAD	RULES	ABS	LAD	RULES	ABS
Lead lawyer	P	8	7	6	9	6	5	11	8	8
Lawyer	P	5	3	4	5	4	5	7	6	8
	T	4	6	2	5	6	2	5	6	1
Total per division		17	16	12	19	16	12	23	20	17
Overall Total		45			47			60		

DS support staff (paralegals; secretary to panels; editor)		4	4		4	2	1	5	3	4
Admin assistants/ Secretaries/Depository Assistant		2	4	4	2	4	4	3	5	3
Total per division		6	8	4	6	6	5	8	8	7
Overall Total		18			17			23		

P: Permanent post
T: Temporary post